



CAD-300

PC-Based Encoder & Decoder for Midian's Kryptic

Manual Revision: 2010-05-25

Covers Firmware Revisions:
CAD-300: 3.7

Covers Software Revisions:
CAD: 3.21 & Higher

Covers Hardware Revisions:
CAD: 219F

HARDWARE SPECIFICATIONS

Operating Voltage	7.5-15 VDC
Operating Current	40 mA
Maximum Current	1 A
Operating Temperature	-30 - +60 C
Modem Baud Rate	1200
Audio Input Level	30 mV to 4.5 V p-p
Audio Output Level	0 – 3.5 V p-p

SIGNALING SPECIFICATIONS

CAD-300: Midian's Kryptic

ANI Length	4 digits
ANI Timing	~150 msec
Digits Supported	0-9

SYSTEM REQUIREMENTS

Operating System:	Windows 98 SE, 2000, XP SP2 and higher, Vista (32 bit), 7 (32 bit)
Processor:	Pentium 2 or Higher
Hard-Drive Space:	Minimum 20 MB
RAM:	Minimum 256 MB

USB Port is standard. Serial Port is available upon request.
Serial to Ethernet Option (decode only) is available (CAD Option B).

INSTALLATION OVERVIEW

1. Test the radio for functionality.
2. Connect the CAD modem to the radio per the Hardware Installation Section of this manual.
3. Program the CAD software and modem per the Product Programming Section of this manual.

* Midian is not responsible for any damage/loss resulting from the use of Midian's products.

GENERAL INFORMATION

Midian's CAD Series products work with Midian's TVS-2 and VPU-15 series products to display ANI and Emergency ANI to identify which field unit is being keyed. The following is a list of benefits provided by ANI systems:

- Allows dispatchers to know who he or she is talking to.
- Identify system abusers.
- Identify emergency conditions.
- Assign calls fairly.

In addition to decoding ANI and ENI, Midian's CAD-300 offer selective calling for functions such as individual call, group call, disable/enable, Over-The-Air-Reprogramming (OTAR), etc. These functions can be used with Midian's TVS-2 and VPU-15 series products.

HARDWARE INSTALLATION

Be certain to follow standard anti-static procedures when handling Midian products. For installation instructions for a particular radio, please consult Midian's application notes for the CAD if available.

P1-1 – Ground – Connect to ground in the base station.

P1-2 – B+ - Connect to a 7.5-15 VDC source in the base station or from an external power supply.

P1-3 – PTT Output – This open collector provides a ground during PTT.

P1-5 – Squelch Output – Connect to a squelch point in the base station that mutes the speaker.

P1-8 – Alarm Output – This connection is optional as the PC will give an audible tone. This output goes active whenever an emergency status is received. The transistor Q4 provides an open collector to ground to trip a bell, sonalert, etc. It is necessary to install a jumper from the collector of Q4 to P1-8.

P1-9 – COR Input – Connect to a point in the radio's squelch or CTCSS circuit that changes logic level when a carrier is detected. If a high level is provided, move R40 from its pull up to its pull down position. A radio whose squelch circuit provides a logic-low or high can readily turn Q1 on and off. If the point only makes a small change in voltage, it may be necessary to adjust the values of R39 and R40 to Q1 to change states. If the COR is not being used ground this input and program the COR polarity as ground.

P1-10/P1-11 – RX 600-Ohm Balanced – Optional – This is a 600-Ohm balanced input that is used when directly connected to the RX line from the base station in a remotely controlled base station over a dedicated phone line.

P1-12 – RX HI-Z Input – Connect to the receiver audio output of the base station, preferably after the CTCSS high-pass filter.

The following connections are only needed when encoding.

P1-4 – Trunk Delay Input – This input prevents the modem from transmitting until a channel has been acquired. Hook to a point in the radio that provides an output after the channel has been acquired.

P1-6 – TX Audio Output – Connect to the MIC-High in the radio. Removing JU4 and installing R81 with a value equivalent to the required impedance can change the output impedance.

P1-7/P1-8 – TX 600-Ohm Balanced Output – Optional – The CAD must be ordered with the CAD Option A for this output. Connect this output to the TX side of a 600-Ohm balanced audio source. If using this feature the Alarm Output is not available and JU8 should be removed.

P3 is the USB connector.

The following are the pins used on the optional Female DB-9 connector P2 (RS-232).

P2-2 – TX Output

P2-3 – RX Input

P2-4 – Data Terminal Ready

P2-5 – Ground

P2-6 – Data Set Ready

P2-7 – Clear To Send

P2-8 – Request To Send

HARDWARE ALIGNMENT

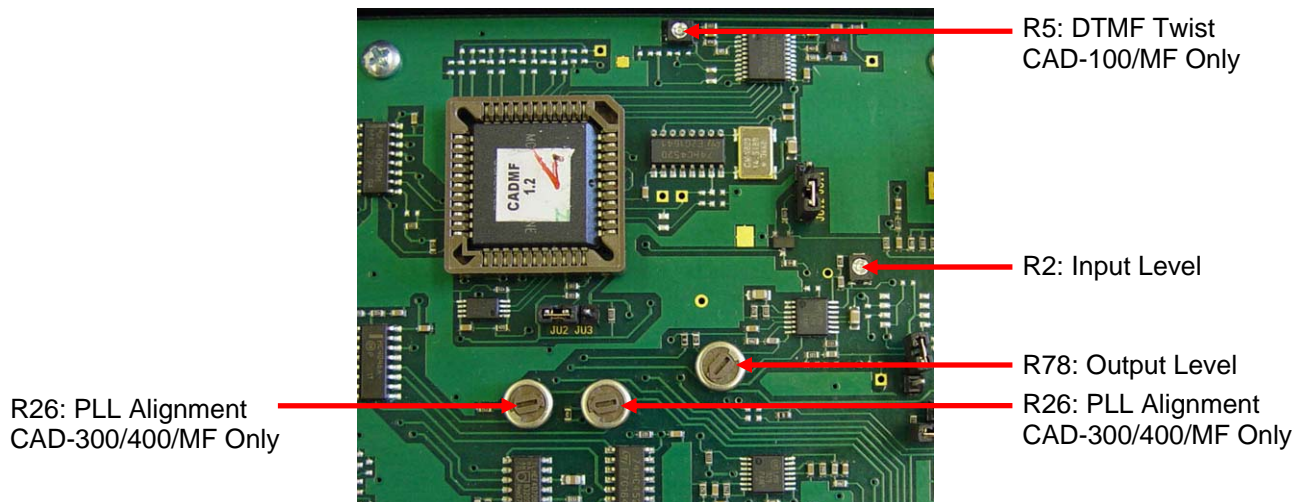
CAD-300:

1. Using a service monitor in the generate mode, provide a signal level strong enough to quiet the base station. Set the 1 KC test tone for 3.5 KC deviation.
2. Observe TP-1 with an AC voltmeter or oscilloscope and set the level via R-2 to 250 mV RMS (700 mV p-p).
3. Switch the service monitor over to receive mode to set the base station's transmitter's deviation from the CAD-300. Program the modem with a Front porch time of 900 msec and select the Front porch tone to be sent as a preamble. Start the CAD software and select a unit to call and hit enter to send data. The data will last for a little over 1 second allowing time to adjust R-78 for a minimum deviation of ± 3.3 KHz on the base station transmitter. After setting the deviation you will want to disable the front porch tone.
4. Using a TVS-2, send an ANI, selective call, etc. to see if they display on the CAD screen. If they do not display check the radio's modulation to make sure it is running between 3.5-4.5 KC of deviation.
5. Send signals from the CAD and check for decoding and ringing of the field units.

CAD-300 Decoder PLL Alignment:

The phase-locked-loop is pre-adjusted at the factory and should not need adjustment. In the event that it does require adjustment, perform the following steps:

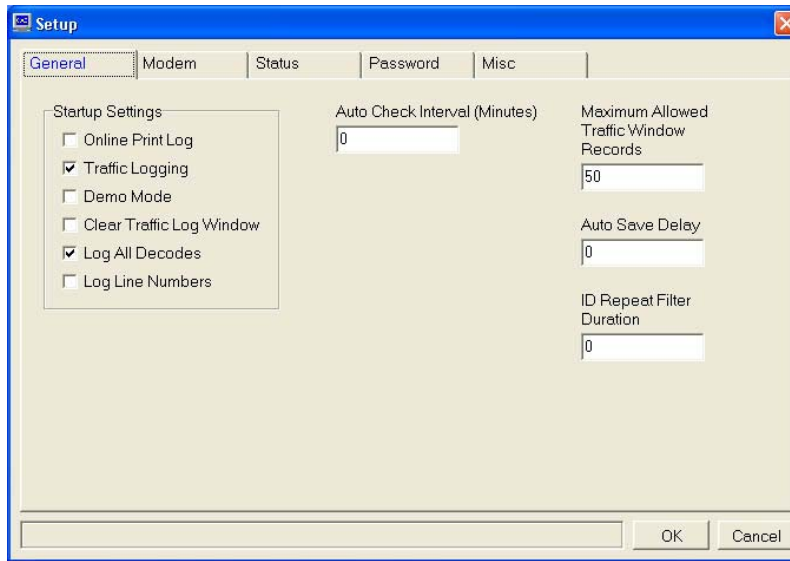
1. Ground U8-9.
2. While observing U8-4 with a frequency counter or oscilloscope, adjust R28 such that 19.6 kHz is measured at U8-4.
3. Remove ground from U8-9. While observing U8-4 with a frequency counter or oscilloscope, adjust R26 such that 27.6 kHz is measured at U8-4.



SOFTWARE INSTALLATION

Insert the CD into the CD-ROM drive and close the drive. The CD will auto-run. Click on the side menu bar for miscellaneous software and select the CAD software. Follow the set-up procedures.

General Tab:



Online Print Log: If checked the CAD software will output all incoming traffic to a printer connected to LPT1.

Traffic Logging: If checked the CAD software will log all traffic to a log file. The first time the software is launched a log folder will be created in C:\Program Files\Midian\Cad_v3_xx. Each time the CAD is used and traffic is received the software will output the traffic in ASCII format to a log file in this location. The log file name will be created based on the system date of the PC. These log files can then be exported to Microsoft Excel or Access for reports.

Demo Mode: If checked the software will create fictional ANI and Emergency ANI decodes on the traffic screen using the programmed subscribers.

Clear Traffic Log Window: If checked, upon exiting and restarting the software the traffic window will be cleared of previous activity.

Log All Decodes: If checked the CAD will decode and display any sequence with a valid ANI length, even if the sequence is not in the subscriber database.

Log Line Numbers: If checked the CAD will add a line number to each entry in the log file starting with 1 and increasing incrementally until the log file rolls over into the next day, where it will start at 1 again.

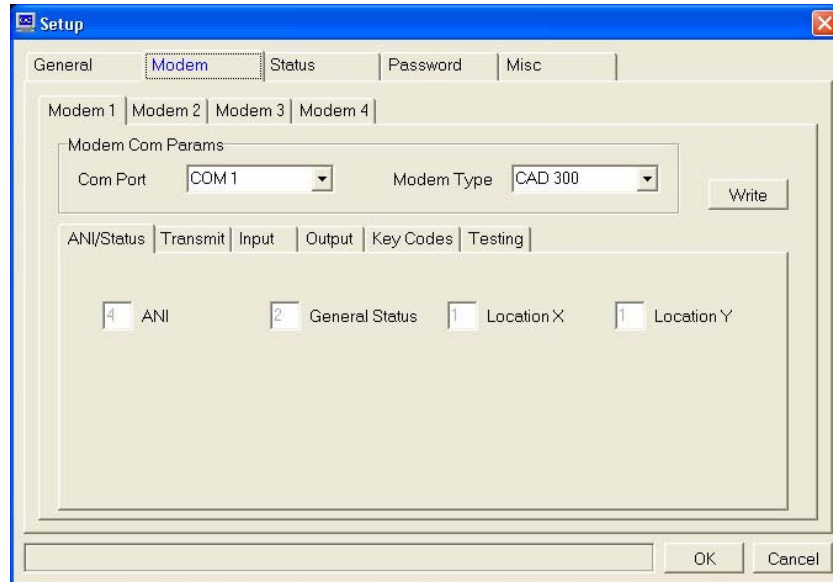
Auto Check Interval: This will set the amount of time that will pass before the Auto Check feature will begin to issue a check command to a subscriber in the database. Subscriber Auto Check must be in each of the desired subscriber records to be checked. If a zero is entered in this field, Auto Check will be globally disabled regardless of the subscriber Auto Check feature.

Maximum Allowed Traffic Window Records: This will limit the number of records kept on the traffic screen in the CAD software.

Auto Save Delay: Setting this option to 0 will disable the Auto Save feature. Setting this field from 1 to 59 minutes will determine when the application will force any changes made out to the disk.

ID Repeat Filter Duration: For example if set for 9 seconds and the CAD displays an ANI and 6 seconds later the same ANI is decoded, the CAD will not display the repeated ANI.

Modem Tab:



Note: Prior to writing to the modem, the RX Input must either be quieted or disconnected. If there is noise present at the RX Input during modem programming, it may interfere with programming and result in EEPROM corruption.

Modem 1-4: The CAD software can support up to 4 different CAD modems connected to different ports on the PC.

COM Port: Select the COM Port that the CAD modem is connected to on the PC.

Modem Type: Select the type of CAD modem that is connected to the COM Port.

ANI/Status Tab:

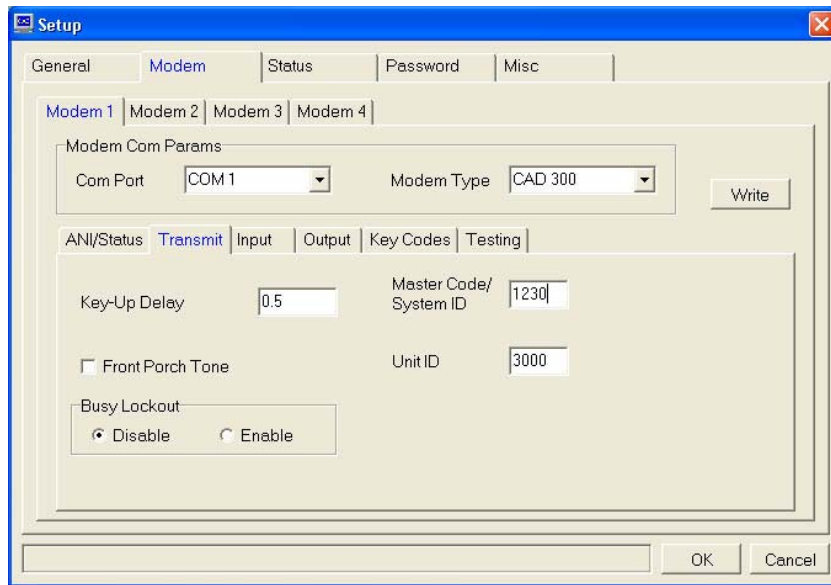
ANI: The range of this field is hard coded to 4 digits as Midian's Kryptic is a 4-digit format.

General Status: The range of this field is 2 digits.

Location X: The range of this field is 1 digit. This enables the decoding of a location. If only using Location X and not Location Y, this is typically a common location such as an airport, mall or park. If using Location X and Location Y, then a grid location is used such as Broadway Blvd and Main St.

Location Y: The range of this field is 1 digit. This enables the decoding of a location. When using Location X and Location Y, a grid location is used such as Broadway Blvd and Main St.

Garbage Filter: If checked the CAD will only display ID's programmed into the subscriber database. This is used to prevent the decoding and displaying of false ID's due to noise.



Transmit Tab:

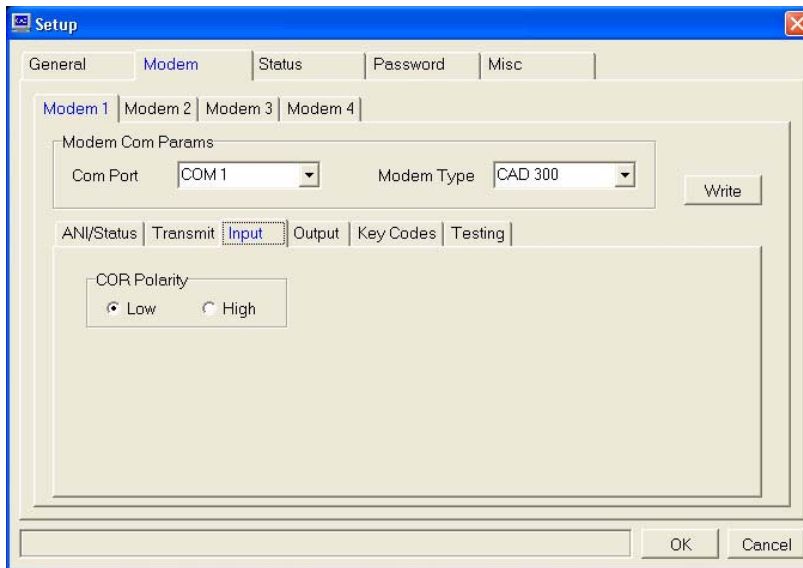
Key-Up Delay: The range of this field is 0.0 to 9.9 seconds. This sets the amount of time the CAD waits for the base station radio to key-up prior to generating tones.

Front Porch Tone: Do not use this field unless instructed otherwise by Midian.

Busy Lockout: If enabled the CAD will not transmit if the COR Input is active. If disabled the CAD will transmit regardless of activity on the channel.

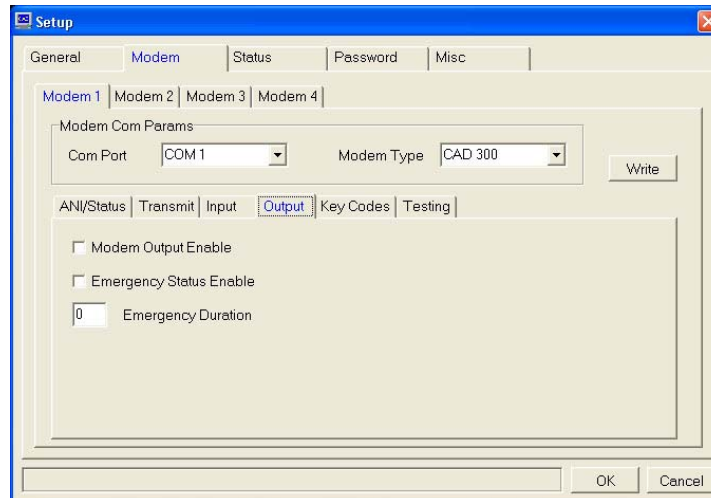
Master Code/System ID: The range of this field is 0000-9999. This sets the System ID code of the CAD to match the System ID of the TVS-2 voice scramblers.

Unit ID: The range of this field is 0000-9999. This sets the Unit ID code of the CAD modem.



Input Tab:

COR Polarity: This sets the active polarity that the CAD looks for from the radio to indicate channel busy. The CAD uses the COR for busy lockout and to validate a decode to reduce falsing.

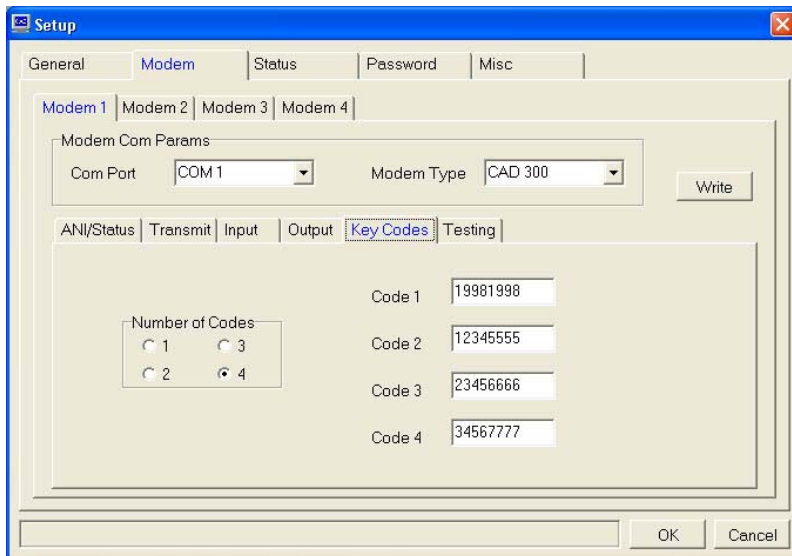


Output Tab:

Modem Output Enable: Not used at this time.

Emergency Status Enable: Not used at this time.

Emergency Duration: Not used at this time.



Keycodes Tab:

This tab is used to set the number of codes to be reprogrammed using OTAR and the desired codes to be used when the OTAR command is sent.

Number of Codes: Select the number of codes to be used for the OTAR command from 1-4.

Code 1-4: Enter the security codes that will be programmed using the OTAR command.

Status Tab:

System Status: This allows a System Status Message to be renamed or translated into a different language by entering the desired message in the Message column next to the original message.

General Status: This allows a General Status Message to be renamed or translated into a different language by entering the desired message in the Message column next to the original message. Additionally, the desired digit for an Emergency status is checked in this table. If doing a 2-digit status, then 0-9 will need to be renumbered as 00-09. If doing a 2-digit status and more than 10 statuses are needed then from the last ID field press the down arrow and enter the new status number and create the desired message.

Location X: This allows a Location X Status Message to be renamed or translated into a different language by entering the desired message in the Message column next to the original message. If only using Location X and not Location Y, this is typically a common location such as an airport, mall or park. If using Location X and Location Y, then a grid location is used such as Broadway Blvd and Main St.

Location Y: This allows a Location X Status Message to be renamed or translated into a different language by entering the desired message in the Message column next to the original message. If using Location X and Location Y, then a grid location is used such as Broadway Blvd and Main St.

Password Tab:

If the system administrator wishes to password protect certain functions, check the enable password box and then select which features to protect. When the protected features are accessed the user will be prompted to enter the password.

Misc Tab:

Color Tab: This tab enables the administrator to change the appearances of active text and the various backgrounds.

Audio Tab: This tab enables the administrator to change the sounds of the Emergency and Error files, with other wav files.

Images Tab: This tab enables the administrator to change the appearances of the icons on the subscriber screen.

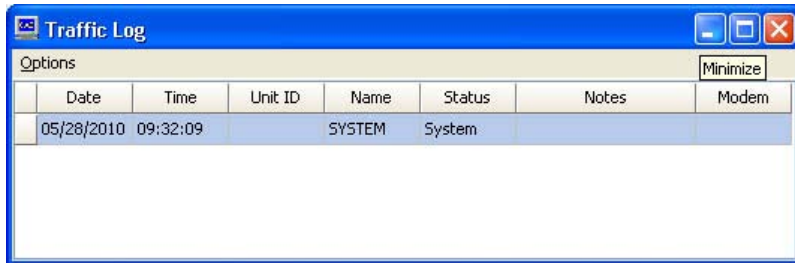
OPERATION

Main Window:

File Menu: Here the user can print and import subscriber and other databases.

Window Menu: Enables the user to change which windows are displayed on the screen.

Traffic Log Window: The information in this screen will show system activity in chronological order with the most recent being at the top of the screen. Columns may be moved into any order by clicking and dragging the filed into the desired position. Columns can be added and removed from the display by going to Options > Traffic > Visible Columns.



Date	Time	Unit ID	Name	Status	Notes	Modem
05/28/2010	09:32:09	SYSTEM	System	System		

Subscribers Window: Clicking a particular column header enables the dispatcher to sort the column. Columns may be moved into any order by clicking and dragging the filed into the desired position.



Unit ID	Name	Last Recv	Status
1234	John Smith	06/01/2010 13:38:51	
4413	Michael Lee	06/01/2010 13:38:19	
3124	Jim Rodriguez	06/01/2010 13:37:54	



Add New Subscriber: Clicking on the add icon will open the subscriber information screen. Enter the user description and the desired ID's. Please see the Subscribers section for details on adding new subscribers.



Edit Subscriber: Select the unit to be edited and click on the edit icon. The subscriber information screen will be opened, so the unit details can be edited.



Delete Subscriber: Select the unit to be deleted and click on the delete icon. This will permanently delete the unit from the database.



Subscriber Properties: TBD.



Call: Select the unit to be called and then click the call icon. If the unit is programmed with a call ID then the unit in the field will decode and ring.



Query: Select the unit to be queried and then click the query icon. This will send a query or radio check command to field units capable of this feature, which will in turn cause the radio to send an acknowledgement to the dispatcher to verify the radio is transmitting and receiving.



Enable: Select the unit to be enabled and then click the enable icon. This will re-enable a previously disabled field unit.



Disable: Select the unit to be disabled and then click the disable icon. This will disable a field unit that is capable of the Deadbeat Disable or Radio Kill feature.

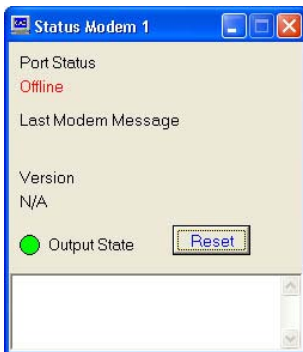


Spy: Select the unit to be remotely monitored and then click the spy icon. If the field unit is capable of this feature the field unit will key-up for a pre-programmed period of time, so the dispatcher can listen in on the field unit.

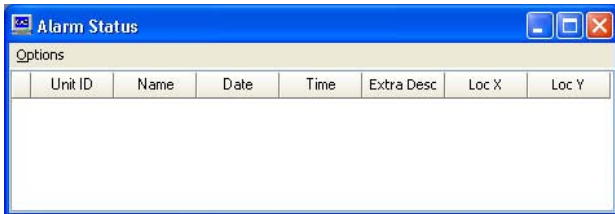


Over-The-Air-Reprogramming (OTAR): Select the unit to have its security keys reprogrammed and click on the OTAR icon. This will reprogram the unit with the keys specified in the set-up.

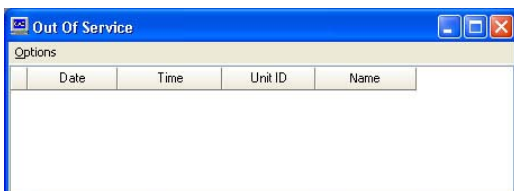
Modem Status Window: This screen will indicate if the modem is on-line or off-line and the version of the modem.



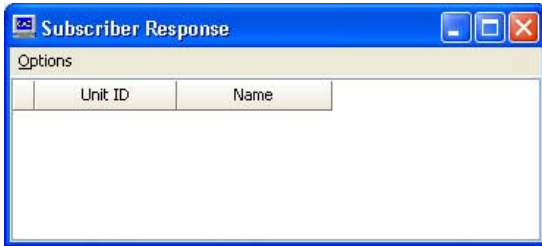
Alarm Status Window: This screen will display incoming emergency statuses in addition to them displaying in the traffic window.



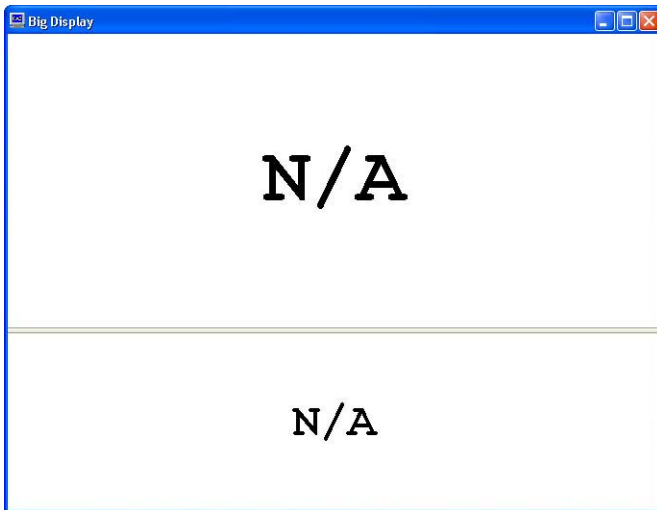
Out of Service Window: When using the Query function this window will show if a subscriber did not respond.



Subscriber Response Window: When using the Query function this window will show if a subscriber responded. The response will also show in the traffic window.



Big Display Window: For easier viewing incoming calls can be displayed in the Big Display with the Unit ID being shown in the top box and the Subscriber name (alias) being shown in the bottom box.



SUBSCRIBERS

The screenshot shows the 'Edit Subscriber' window with the following fields and values:

- Name:** John Smith
- Serial Number:** (empty)
- Group ID:** (empty)
- Radio Make:** (empty)
- Unit ID:** 1234
- Radio Model:** (empty)
- Extra Description:** (empty)
- Receive Modem:** Modem 1
- Receive Modem Lock:**
- Decode Format:** ZAP
- Transpond Code:** (empty)
- Emergency IDs - Group ID:** (empty)
- Emergency IDs - Unit ID:** (empty)

Name: This is the alias for the Unit ID that will be displayed when a Unit ID is decoded.

Serial Number: This field can be filled with the serial number of the radio. This field is for informational purposes.

Unit ID: Enter the Unit ID (ANI) of the radio in this field.

Radio Make: This field can be filled with the radio manufacturer's name. This field is for informational purposes.

Radio Model: This field can be filled with the radio model number. This field is for informational purposes.

Extra Description: This is a text field, so that additional information on the subscriber can be recorded.

Receive Modem: This should be set to the desired modem that was set up in the CAD Setup > Modem.

Receive Modem Lock: If checked the CAD software will only display this subscriber in the software when decoded on the selected modem. If more than one modem is used with the box checked and the same Unit ID is decoded on a different modem then the subscriber will not be displayed.

Decode Format: This displays the signaling format for the selected modem.

Emergency ID: Unit ID: This field is not used in the CAD-300.

Edit Subscriber

General

Name: John Smith Serial Number: _____

Group ID: _____ Radio Make: _____

Unit ID: 1234 Radio Model: _____

Extra Description: _____

Decode | **Encode** | Misc

Transmit Modem: Modem 1

Transmit Group ID

Encode Format: ZAP

Call ID: 1234 Spy Code: 1234

Enable Code: 1234 Check ID: 1234

Disable Code: 1234 Emergency ACK Code: 1234

OK Cancel

Transmit Modem: This should be set to the desired modem that was set up in the CAD Setup > Modem.

Encode Format: This displays the signaling format for the selected modem.

Note: The Call ID, Enable Code, Disable Code, Spy Code and Check ID default to the unit ID in Midian's Kryptic. Emergency Acknowledge is not available in the CAD-300.

The screenshot shows a software window titled "Add A Subscriber". It has a "General" tab and a "Misc" tab. The "General" tab contains the following fields: Name (John Smith), Serial Number, Group ID (001), Radio Make, Unit ID (12345), Radio Model, and Extra Description. The "Misc" tab contains three checkboxes: "Enable Auto Check", "Enable Decode Alert", and "Enable Response Detect". There is also a "Decode Alert Audio File" field with "Browse" and "Clear" buttons.

Enable Auto Check: If checked the CAD will add this subscriber to the Auto Check queue. The subscriber must be programmed with a Query ID.

Enable Decode Alert: If selected the CAD will play an audible alert when the CAD decodes this subscriber.

Decode Alert Audio File: A wav file can be selected from the PC to be played for the Enable Decode Alert function. This wav file will play when the subscriber is decoded. There are 3 wav files in the CAD software that can be selected or a wav file can be used from the PC.

Response Detection: Enable Response Detect: Enabling this feature will allow the CAD to monitor if the subscriber has had any radio activity within a period of time.

TECHNICAL NOTES

Radio Compatibility: Midian has taken the utmost care to ensure the CAD integrates with the radio with minimal impact to the features of the radio. However, some features may not be available in the radio when a CAD is used. If a feature is not available, please contact Midian to see if the feature can be added.

International Windows Versions: Even though Midian has worked to make this product internationally compliant, Midian recognizes that there may be additional issues to be resolved.

MIDIAN CONTACT INFORMATION

Midian Electronics, Inc.

2302 East 22nd Street
Tucson, Arizona 85713 USA

Orders: 1-800-MIDIANS

Phone: 520-884-7981

Fax: 520-884-0422

E-mail: sales@midians.com

Web: www.midians.com